

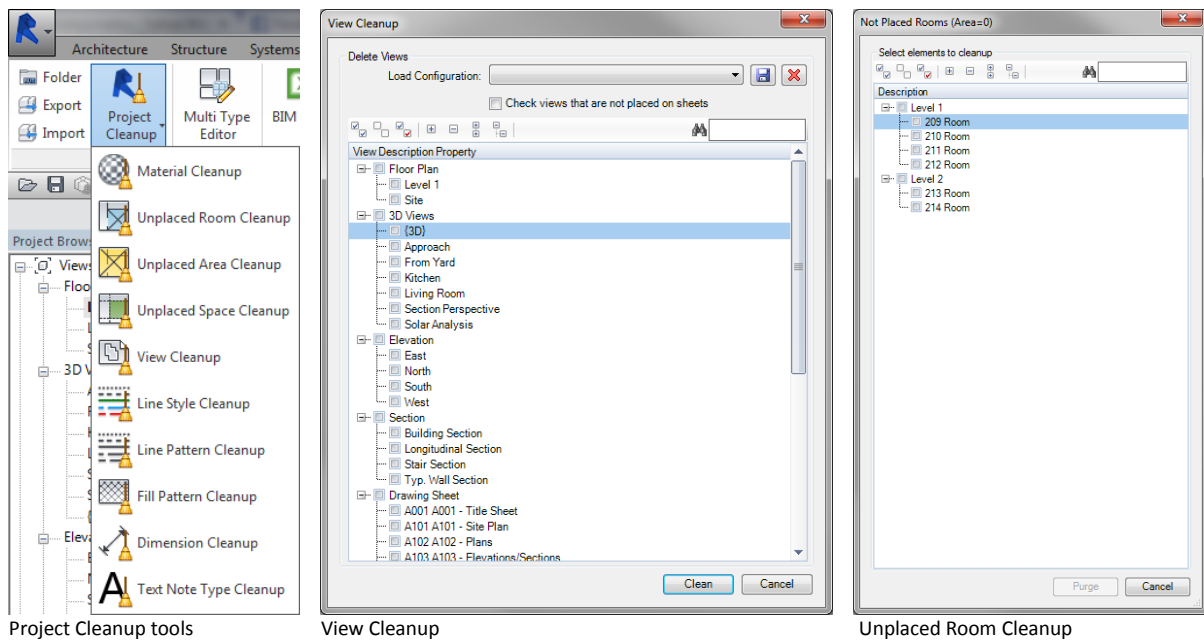
# CGS Revit Tools 2015

*New tools in version 2015*

## BIM Manager

### Project Cleanup tools

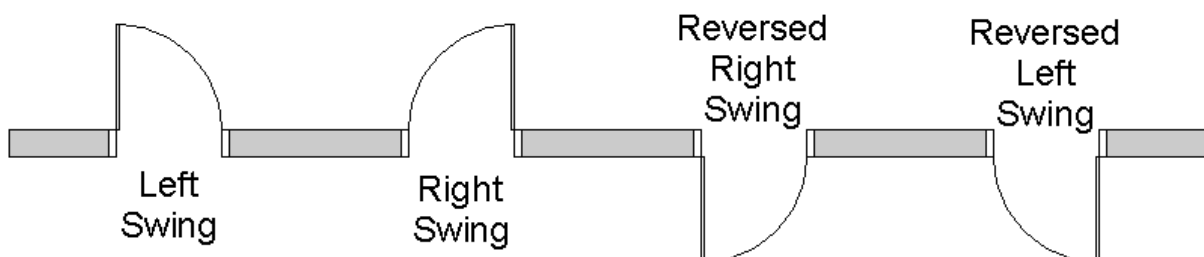
This set of tools present a number of tools to selectively delete line styles, rooms, spaces, views etc. from the project. With tools the project is more organized and light weighted for further use.

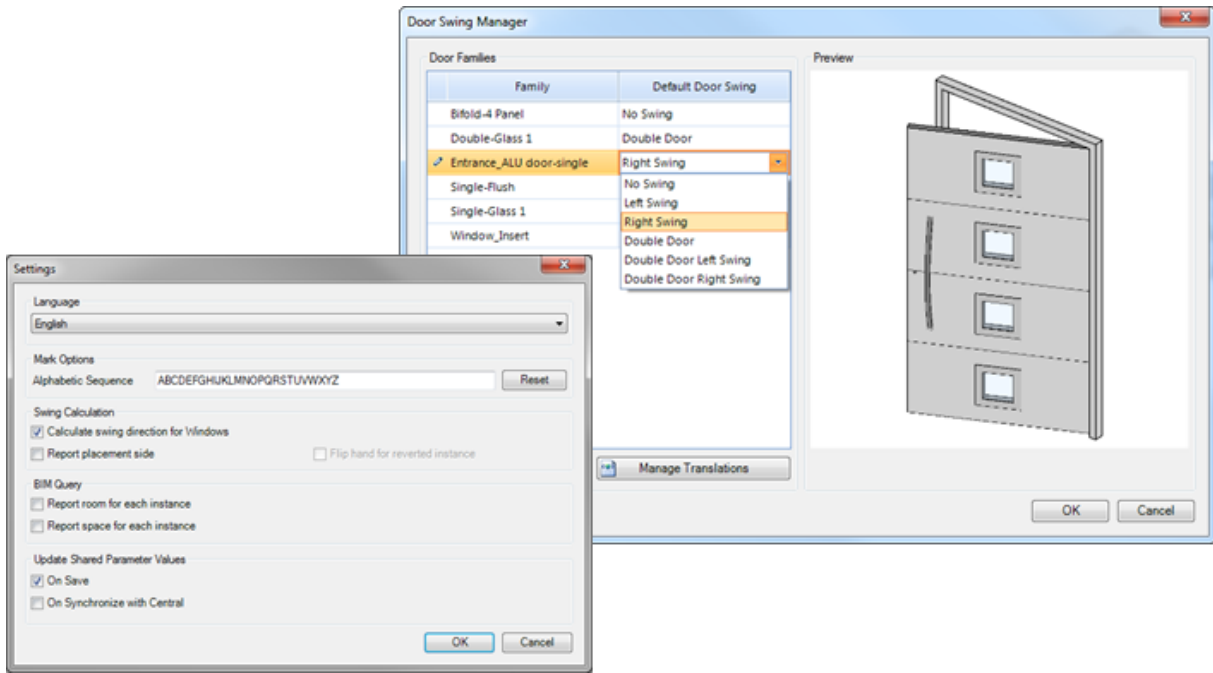


## Analysis

### Swing Direction

The Swing Direction allows user to define swing orientation for doors and windows (one-wing left, one-wing right, double door...). This tool was available already in 2014 version, but now with added functionality to choose the option in settings, which calculates placement side for each instance (left swing, reversed left swing...). Information can still be used in legends and schedules. By changing the position and direction of the door swing in the model, the legend or schedule is automatically updated.

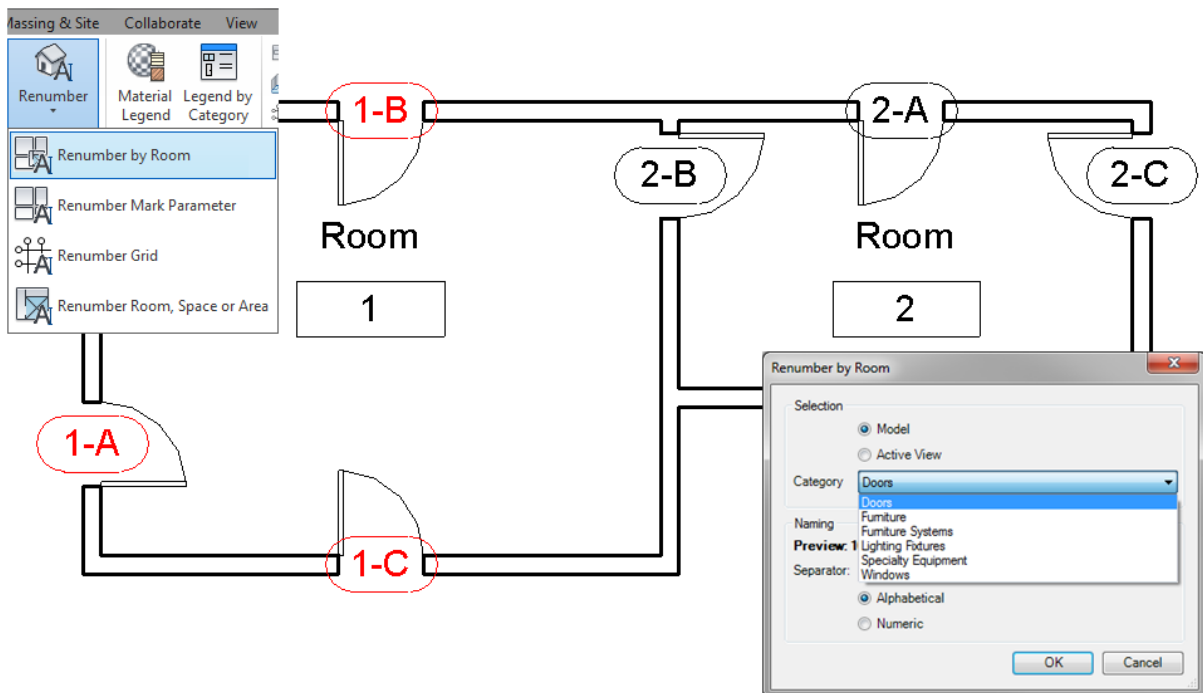




## Annotate

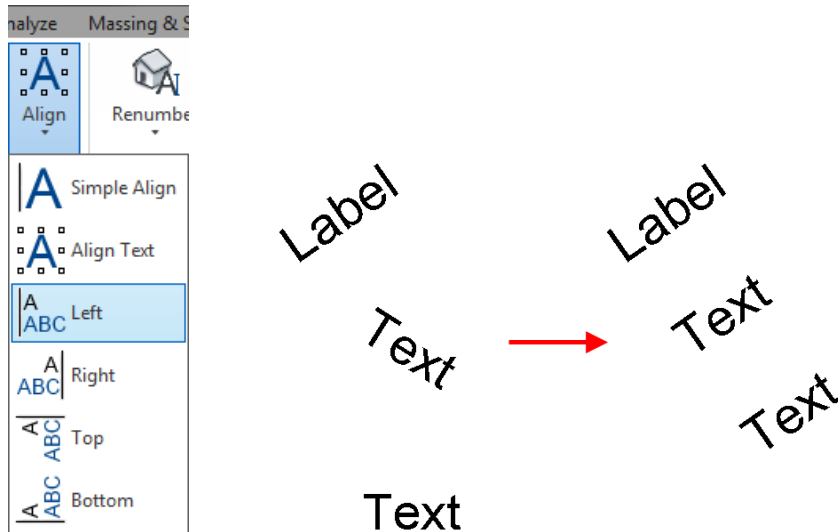
### Renumber tools

Set of tools for renumbering was added in new version. Set includes tools to manually or automatically renumber mark parameters for instances (Door, Window, Furniture...), tools to renumber number parameter in Rooms, Spaces or Areas and to renumber picked grids according to chosen settings in the model.



## Interactive Text Align tools

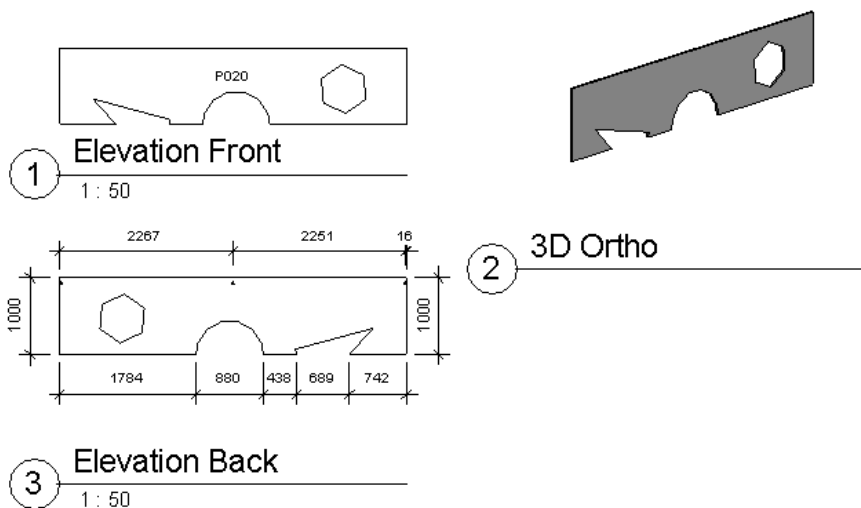
Tools Left, Right, Top, and Bottom can be used to aligning Text Notes or Labels based on selection (it is possible to align on other Text Note or Label).



## Modify

### Create assembly

This tool automatically creates assemblies from selected instances (Structural Column, Structural Foundation, Structural Framing, Furniture, Generic Model, Curtain Panel, Wall or Wall Part).



## View

### ON/OFF toggle

Tool Curtain Wall Mullion was added in version 2015 in Quick On/Off Toggle tools. Tool toggle curtain wall mullion category ON or OFF in active view.

## Other

Besides adding new tools in version 2015.1 of CGS Revit Tools we also enhanced a number of existing tools and fixed a few reported bugs.

Below is the list of tools that has been improved or fixed:

| UPDATED:                   | FIXED:            |
|----------------------------|-------------------|
| BIM Query                  | BIM Query         |
| Swing Direction            | View Cleanup      |
| Multi Join                 | View/Sheet Manger |
| View/Sheet Manger          |                   |
| Room Views                 |                   |
| Toggle tools               |                   |
| Zoom to tools              |                   |
| Resize section box         |                   |
| Added features in Settings |                   |

More about new features is available on <http://usa.cgsplus.com/>.